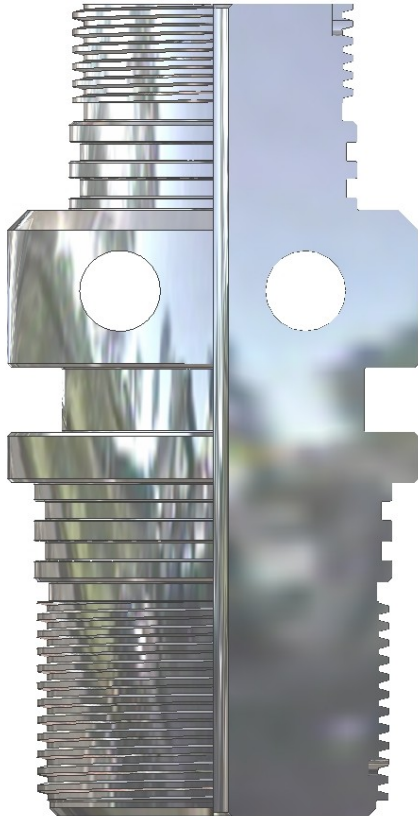


Top Sub DYNAWELL CIS Design

Technical Drawing



Technical Information

APPLICATION:

TOP SUB FOR TCP USE OR WITH QUICK CHANGE ASSEMBLY FOR WIRELINE USE IN EXPENDABLE HOLLOW RETRIEVABLE PERFORATING SYSTEMS.

TOP SUB SPECIFICATIONS:

PRESSURE RATING:

172 MPa 25,000 psi

TEMPERATURE RATING:

DEPENDING ON O-RING TYPE AS SPECIFIED BELOW.

TOP THREAD TYPE:

2.750" – 6 TPI ACME

Packing Information

Sub O.D.		Product Weight	Dimensions of Product
86mm	3 3/8"	5.5 kg	18.5 x 8.6 cm
102mm	4"	8.4 kg	20.5 x 10.1 cm
114mm	4 1/2"	11.2 kg	21.5 x 11.4 cm

Revision: SS02018AE

Selection Chart

Sub O.D. [mm] ["]		Thread Type Bottom ["]	Part No. Top Sub	Part No. O-Ring	Temperature Rating O-Ring
86	3 3/8	2.812 (6 TPI Acme)	2315236	2819415	260 °C / 500 °F
102	4	3.438 (6 TPI Acme)	2315239	2313376	260 °C / 500 °F
114	4 1/2	3.938 (6 TPI Acme)	2315242	2313375	260 °C / 500 °F
All of the above		O-Ring for Top Connection		2819498	260 °C / 500 °F