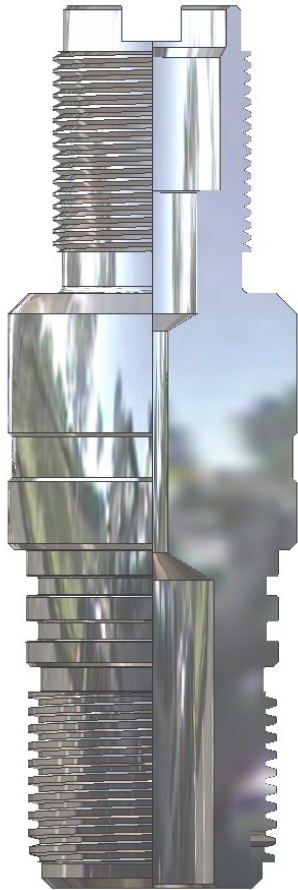


Top Sub DYNAWELL CIS Cable Head

Technical Drawing



Technical Information

APPLICATION:

TOP SUB FOR TCP CIS STYLE CABLE HEAD FOR USE IN EXPENDABLE HOLLOW RETRIEVABLE PERFORATING SYSTEMS.

TOP SUB SPECIFICATIONS:

PRESSURE RATING:

172 MPa 25,000 psi

TEMPERATURE RATING:

DEPENDENT ON O-RING TYPE AS SPECIFIED BELOW.

TOP THREAD TYPE:

CIS CABLE HEAD KG60

Packing Information

Sub O.D.		Product Weight	Dimensions of Product
70mm	2 3/4"	4.8 kg	22.0 x 7.0 cm
73mm	2 7/8"	5.4 kg	22.0 x 7.3 cm

Revision: SS02015AE

Selection Chart

Sub O.D. [mm] ["]		Thread Type Bottom ["]	Part No. Top Sub	Part No. O-Ring	Temperature Rating O-Ring
70	2 3/4	2.375 (6 TPI Acme)	2315229	2313370	260 °C / 500 °F
73	2 7/8	2.375 (6 TPI Acme)	2315233	2313370	260 °C / 500 °F