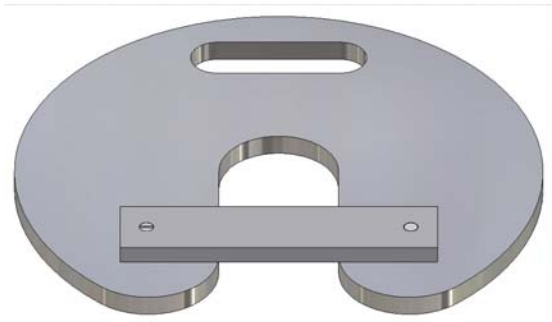


Support Plate DYNAWELL



Technical Information

SPECIFICATIONS:

DESIGNED TO SUSPEND THE PERFORATING GUN ASSEMBLY WHILE CONNECTIONS ARE BEING MADE UP. TO BE INSTALLED IN THE GROOVE IN THE DYNAWELL TOP SUBS OR TANDEM SUBS.

AVAILABLE SIZES:

SEE BELOW

RECOMMENDATIONS:

ALLWAYS LOCK LATCHING BAR IN PLACE

Revision: RP04016AD

Selection Chart

Part No.	Size (mm / “)	Weight (kg)	Dimensions (mm)
	43 – 54/ 1.687 – 2.125	6,0	300 x 300
2315487	70 / 2.75	5,9	300 x 300
2315487	73 / 2.875	5,9	300 x 300
2315488	86 / 3.375	5,6	300 x 300
2315489	102 / 4	5,2	300 x 300
2315490	114 / 4.5	5,2	300 x 300
	178/ 7.000	5,1	300 x 300

Other Sizes available on request