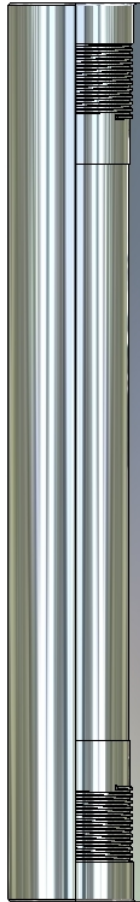


Blast Sleeve DYNAWELL



Technical Information

SPECIFICATIONS:

DESIGNED TO ACCOMODATE THE INITIATING SYSTEM WITH REQUIRED COMPONENTS ABOVE A LOADED PERFORATING GUN SYSTEM DYNAWELL

AVAILABLE SIZES:

SEE BELOW
THREAD TYPE ON BOTH ENDS IDENTICAL TO GUN SYSTEMS DYNAWELL

RECOMMENDATIONS:

ALLWAYS MAKE SURE THAT ELECTRIC WIRES ARE INSULATED TO AVOID SHORT CIRCUITS

Revision: IK04030AB

Selection Chart

Part No.	Size mm / “	Weight (kg)	Dimensions ID x Length x OD (mm)
	43 / 1.687		X 570 x 43
2314457	2”	/	/
2315824	70 / 2.750	6,8	54 x 570 x 70
2315825	73 / 2.875	7,9	55 x 570 x 73
2315826	86 / 3.375	10,1	66 x 570 x 86
2315827	102 / 4.000	12,3	82 x 570 x 102
2315828	114 / 4.500	13,5	95 x 570 x 114
2315829	178 / 7.000	39,0	152 x 570 x 178

Other Sizes available on request