

## TECHNICAL BULLETIN #08012601

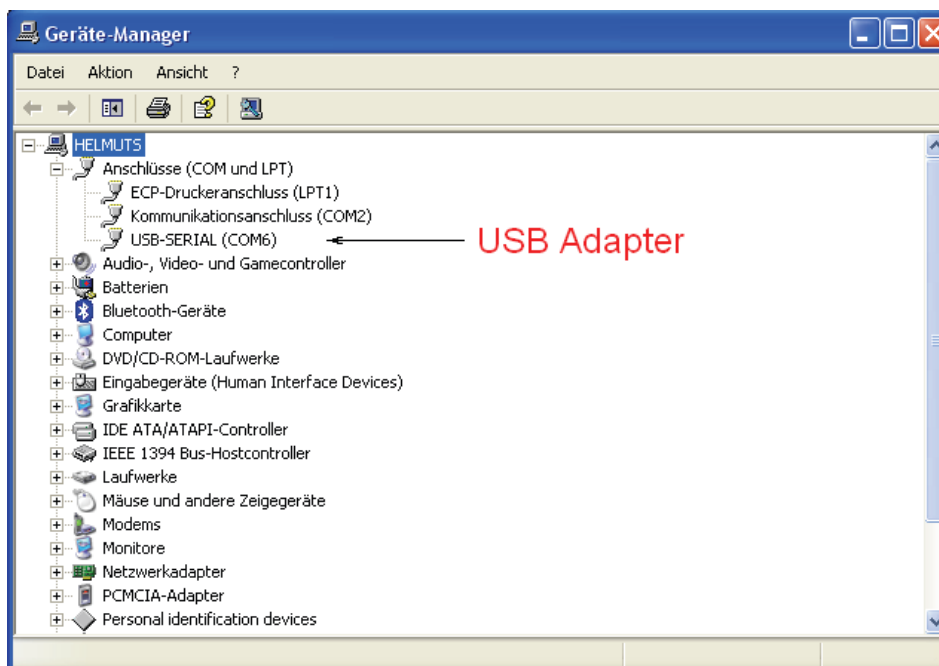
### Use of USB to RS232 Adapter with Multitronic Panel II

DUE TO THE RAPID DEVELOPMENTS IN COMPUTER TECHNOLOGY THE USE OF RS232 PORTS HAS BEEN LARGELY REPLACED BY USB PORTS. TO ALLOW CUSTOMERS TO USE THE MULTITRONIC II FIRING PANEL WITH COMPUTERS THAT DO NOT HAVE A RS232 PORT DYNAenergetics SUPPLIES A USB TO RS232 ADAPTER WITH EACH PANEL.

**PLEASE BE ADVISED THAT THE SUPPLIED ADAPTER HAS TO BE USED AS THIS ADAPTER, TOGETHER WITH THE ASSOCIATED SOFTWARE, HAS BEEN TESTED AS COMPATIBLE WITH THE MULTITRONICS II FIRING PANEL AND SOFTWARE. OTHER, COMMERCIALY PURCHASED ADAPTERS, MAY NOT FUNCTION.**

THE FOLLOWING WILL GUIDE YOU THROUGH THE INSTALLATION PROCESS IF THERE SHOULD BE COMMUNICATION PROBLEMS:

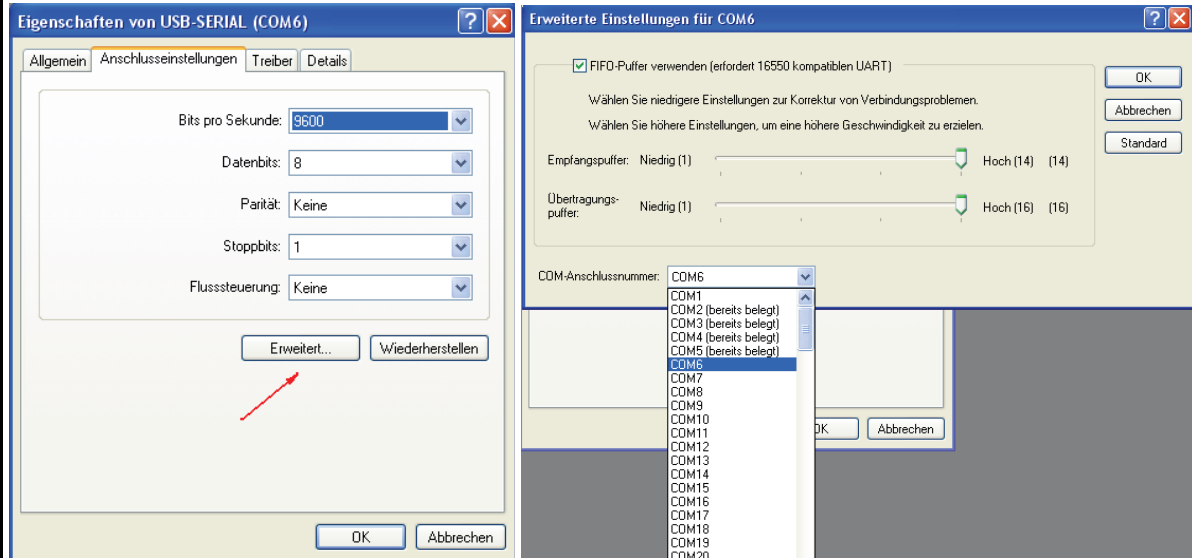
During the installation of the USB to RS232 Adapter, the Windows system is set to a communications port for this (virtual) RS232 port which can not be selected by the user. The actual port chosen can be viewed via the Windows Device Manager (the examples are shown for a German system – but the meaning is recognizable). How to call the device manager is different for different versions of Windows; use Start-Help if you don't know how to. Typically, right click on the systems icon.



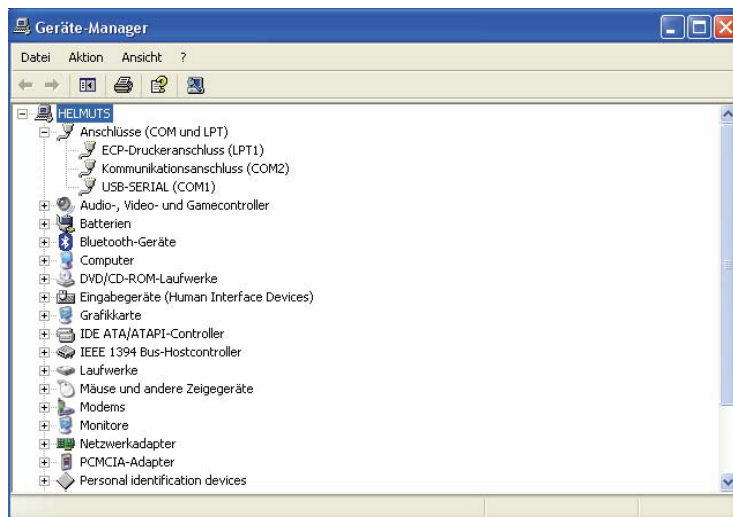
The Multitronic panel only allows for the selection of COM port 1, 2 or 3. It is easily possible, to move the USB adapter to one of these numbers – if (at least) one of them is free. In the example above, the port COM1 is free, so the USB Adapter can be moved there:

## TECHNICAL BULLETIN #08012601

Double click on the line USB-SERIAL. In the Dialog select Port Settings (I'm not sure if this is the correct translation). Then select Extended.



Select a free COM port within the first three entries. Click OK/OK and you are done. In the case that there are no free entries within the first three COM port entries, you have to move one of the devices out first and then move the USB Adapter in as a second step. The only action remaining now is to select the just prepared COM port for use with the Multitronic panel (in the Settings Menu). Please note that the new settings appear in the Device Manager only after it has been closed and reopened.



PLEASE CONTACT YOUR NEAREST DYNAenergetics REPRESENTATIVE FOR MORE INFORMATION OR IF YOU HAVE ANY QUESTIONS.